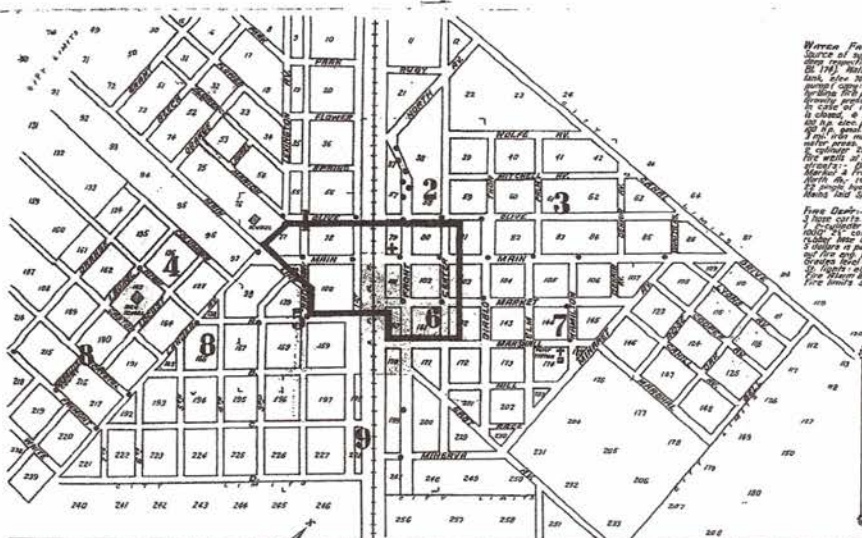


1910



Water Frontage—Municipal Water Works
 Source of supply, 1 well, 240' deep a 50' diameter, 100' diameter at opening, 100' diameter at top, 100' diameter at bottom. Water pumped to a 6000 gal steel tank, 100' high, 100' diameter at top, 100' diameter at bottom, 100' diameter at opening. Water pumped to a 2-story brick building, 100' high, 100' diameter at top, 100' diameter at bottom, 100' diameter at opening. Water pumped to a 2-story brick building, 100' high, 100' diameter at top, 100' diameter at bottom, 100' diameter at opening. Water pumped to a 2-story brick building, 100' high, 100' diameter at top, 100' diameter at bottom, 100' diameter at opening.

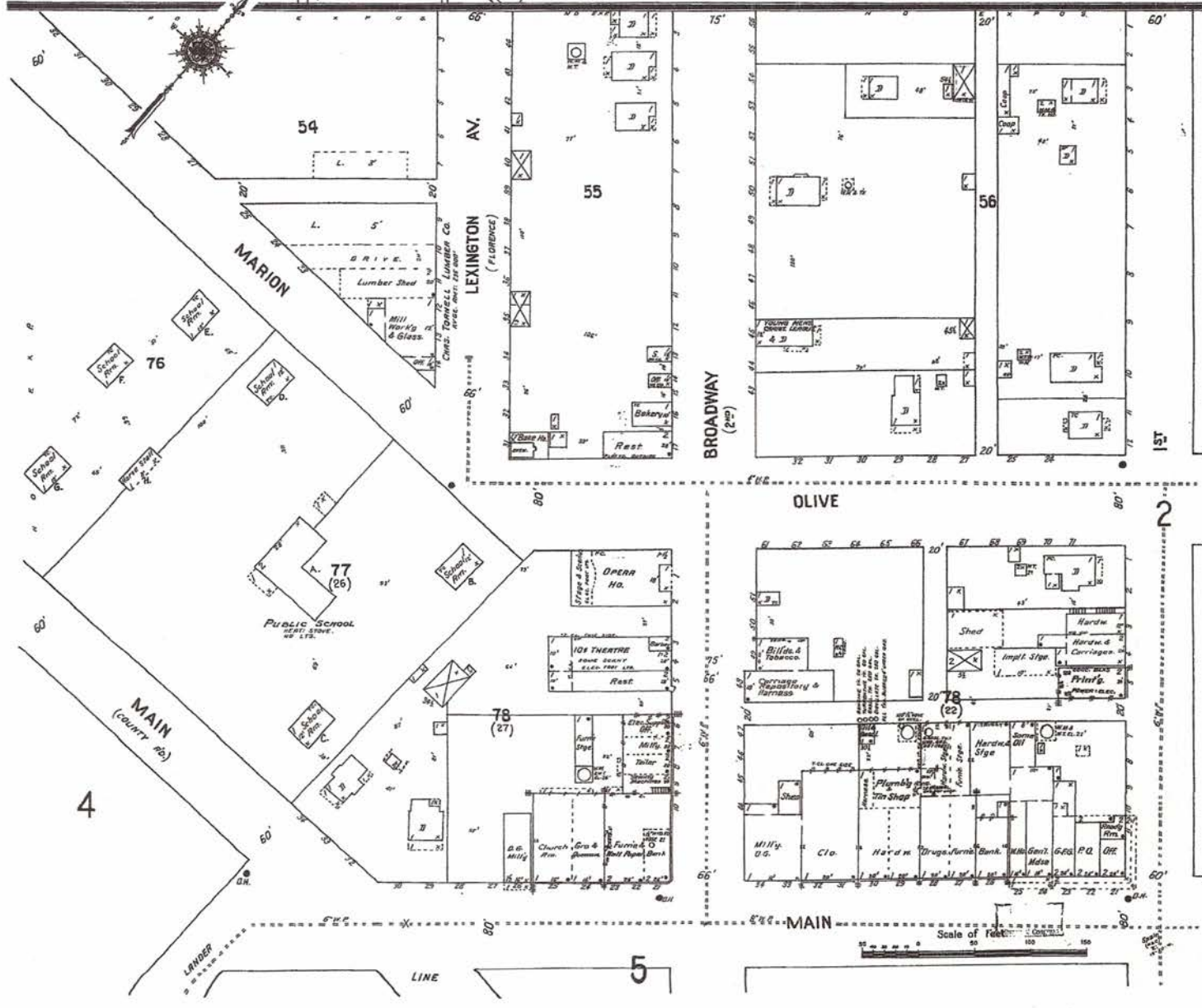


INDEX.

SPECIALS.	Page	Page	
Baptist Church	8	Presbyterian Church	7
Carelyn Hotel	8	Public School	1
Carriage Packing Co.	8	R. C. Church	9
Church of Christ	8	St. Elmo Hotel	8
Congregational Church	8	St. P. E. Co. Depot	6
Grammar School	8	Swedish Church	6
Grange Co. Grain Warehouse, etc.	8	Mission Church	4
Hotel Ramona	8	Torpell, Chas., Lumber Co.	1
Lutheran Church	8	Turlock Creamery	8
M. E. Church	8	Grange Lumber Co.	8
Modesto Lumber Co.	8	Steam Laundry	8
Opera House	8	Union High School	6
		Western Creamery	8
		Young Men's Christian League	1

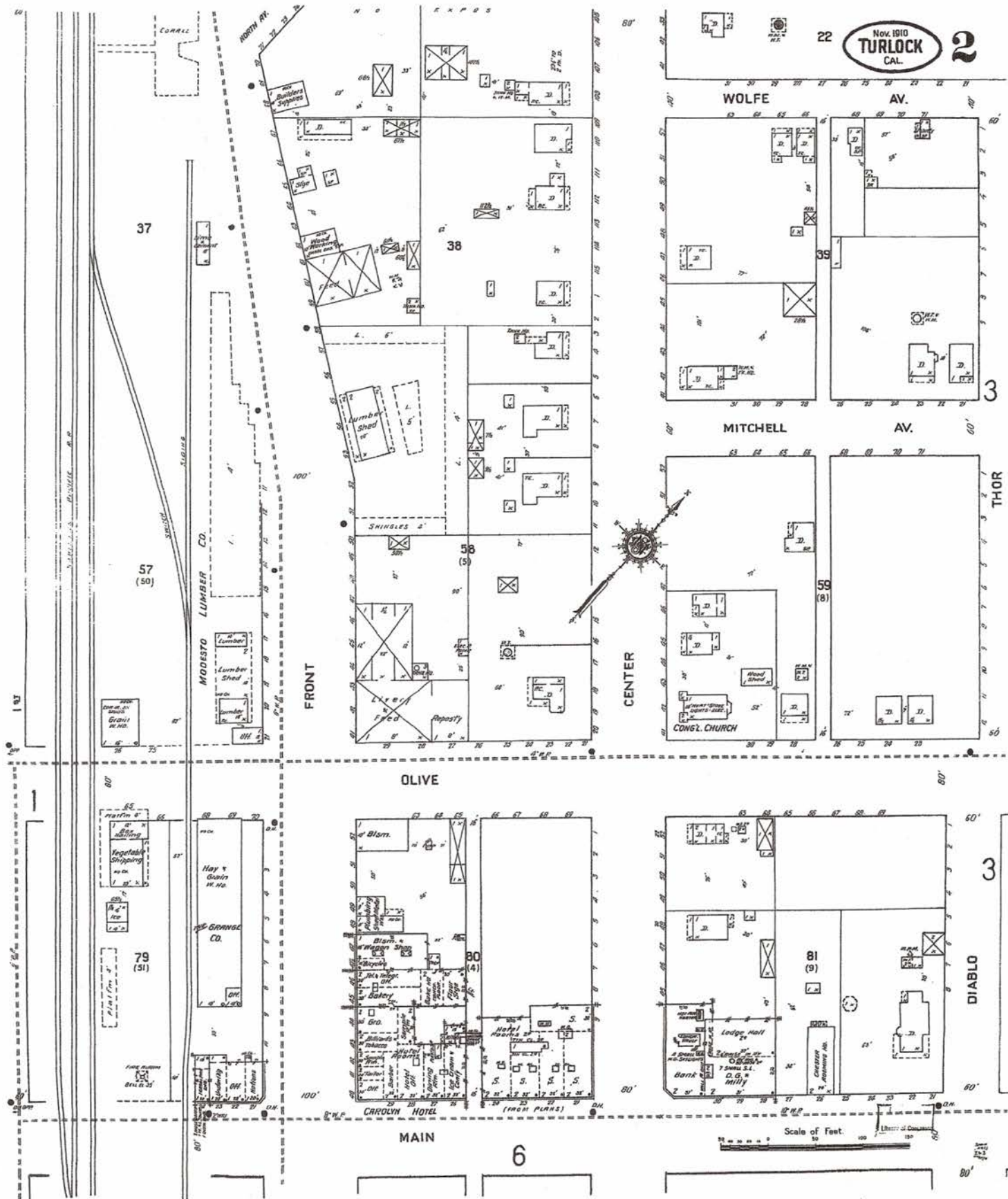
KEY

Red lines show lot lines. Yellow lines show street lines. Blue lines show railroad lines. Green lines show utility lines. Black lines show building footprints. Dotted lines show property boundaries. Arrows indicate the direction of streets. The map is oriented with a north arrow.



Scale of Feet: 0 50 100

1910



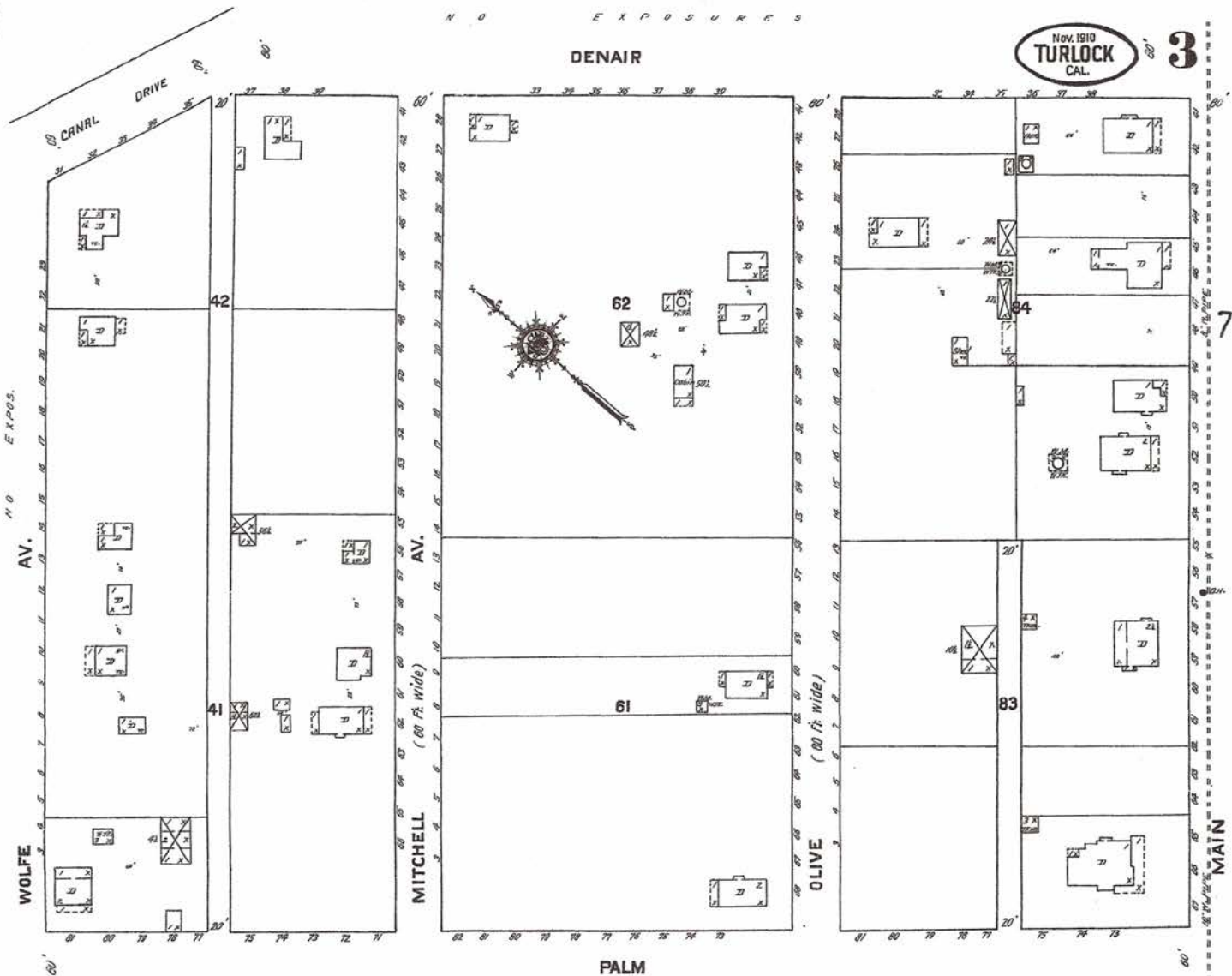
1910.

N O E X P O S U R E S

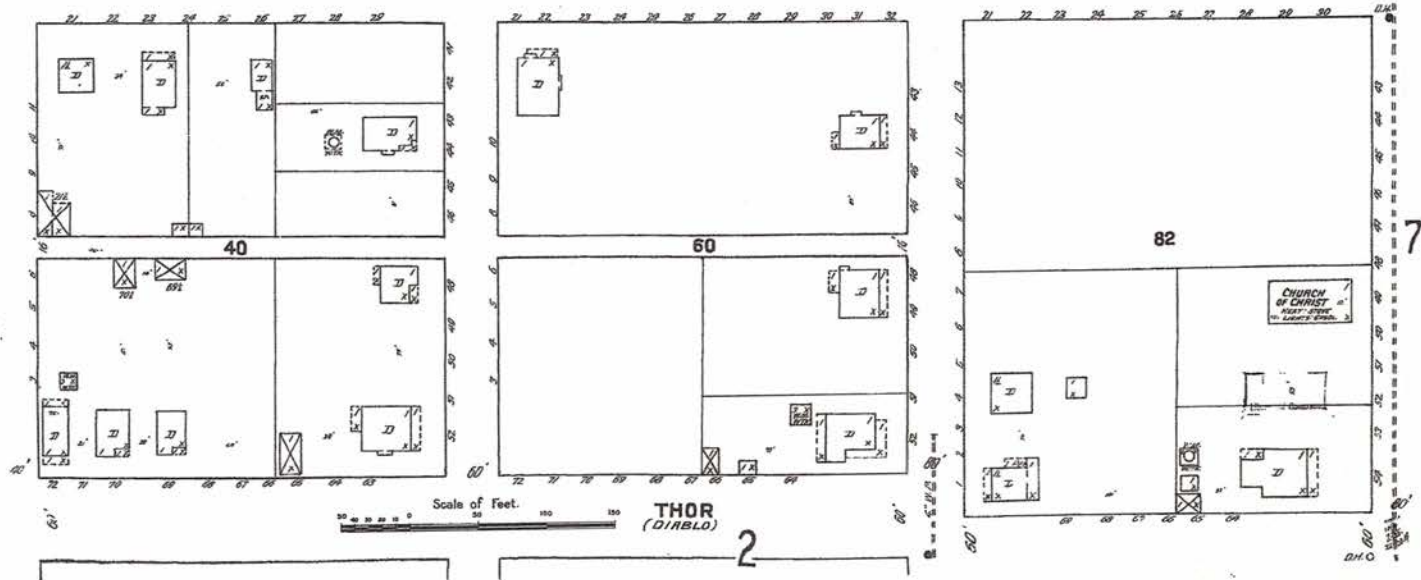
Nov. 1910
TURLOCK
CAL.

3

DENAIR



PALM

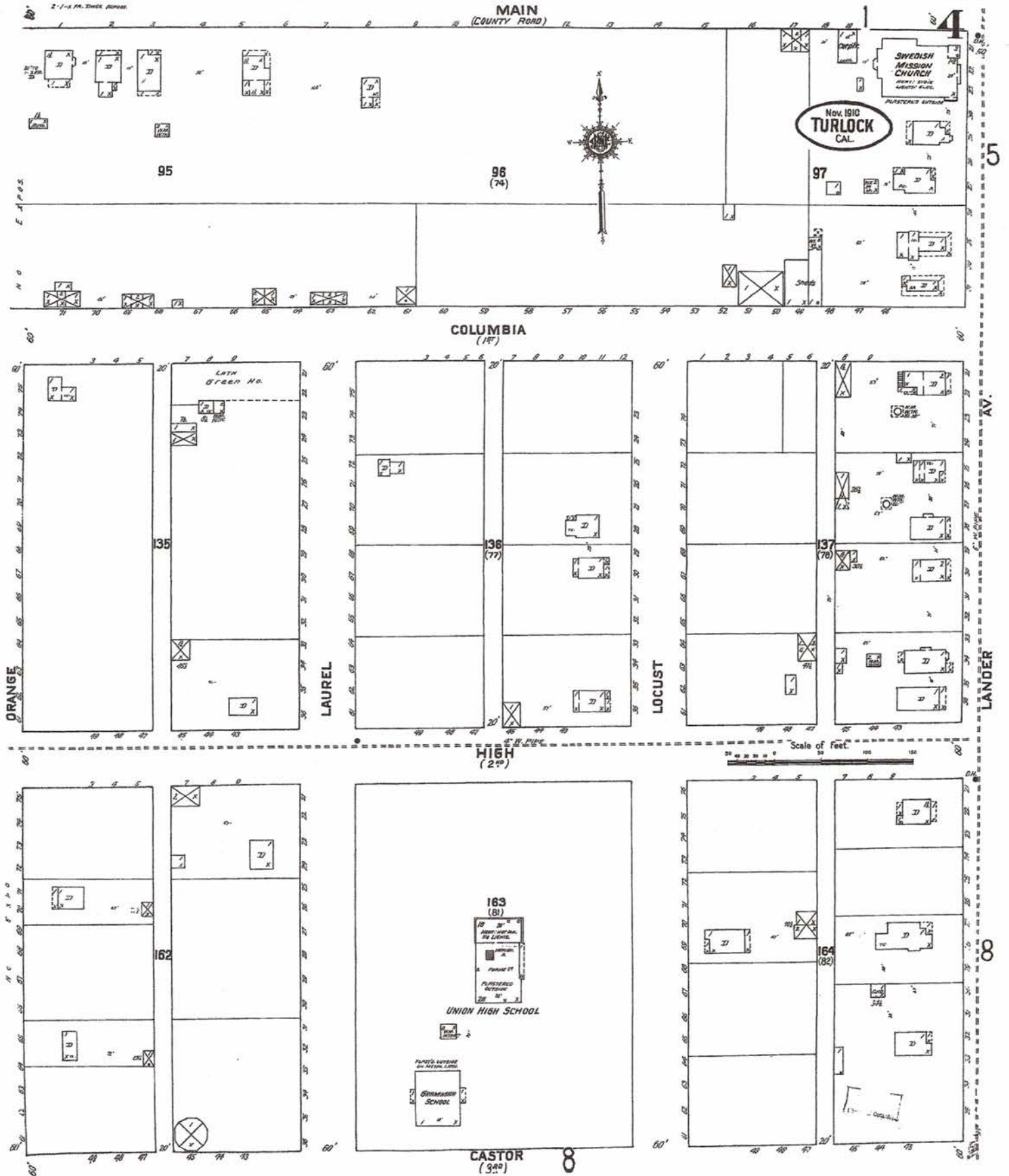


THOR
(DIABLO)

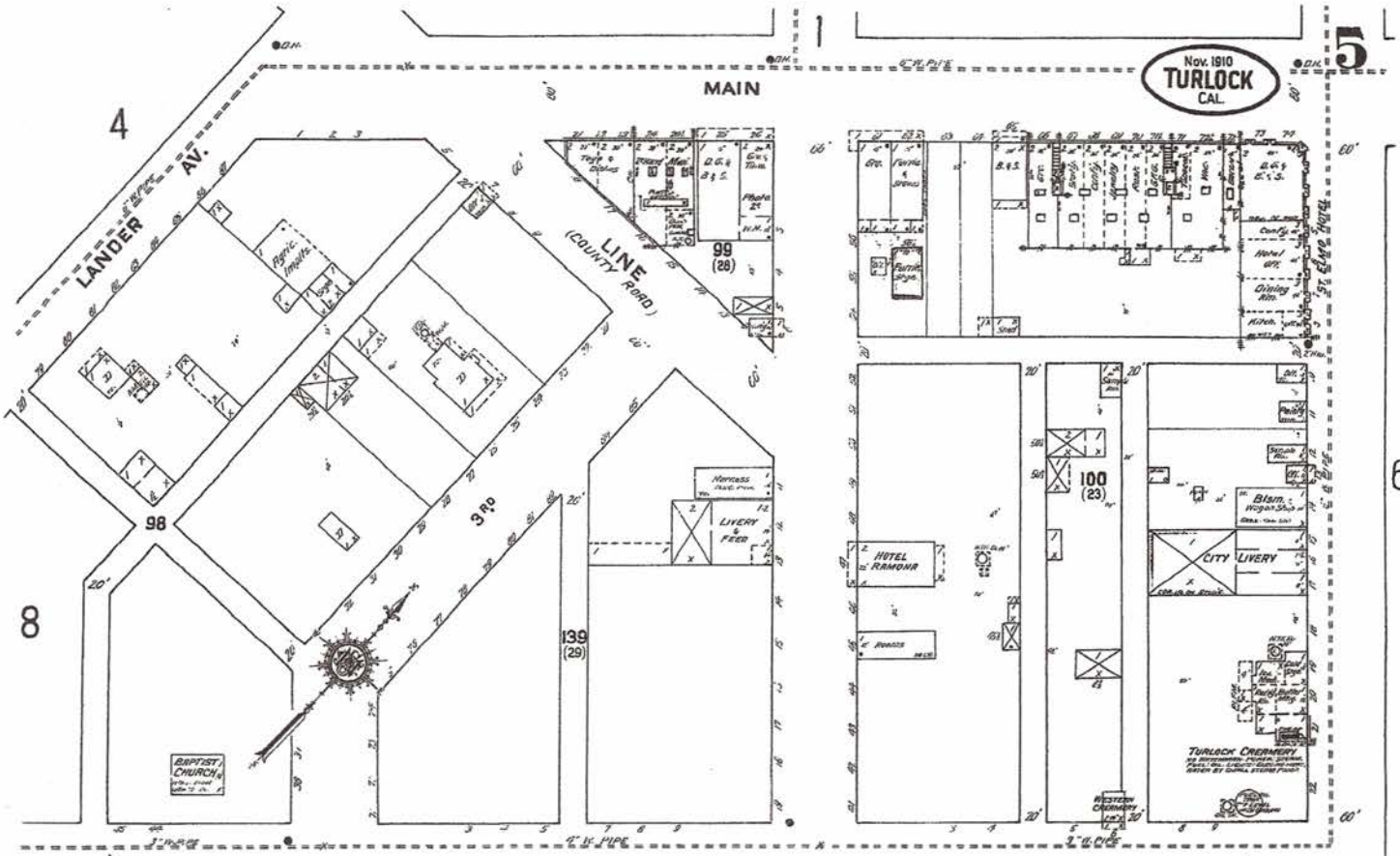
2

D.H.C.

1910

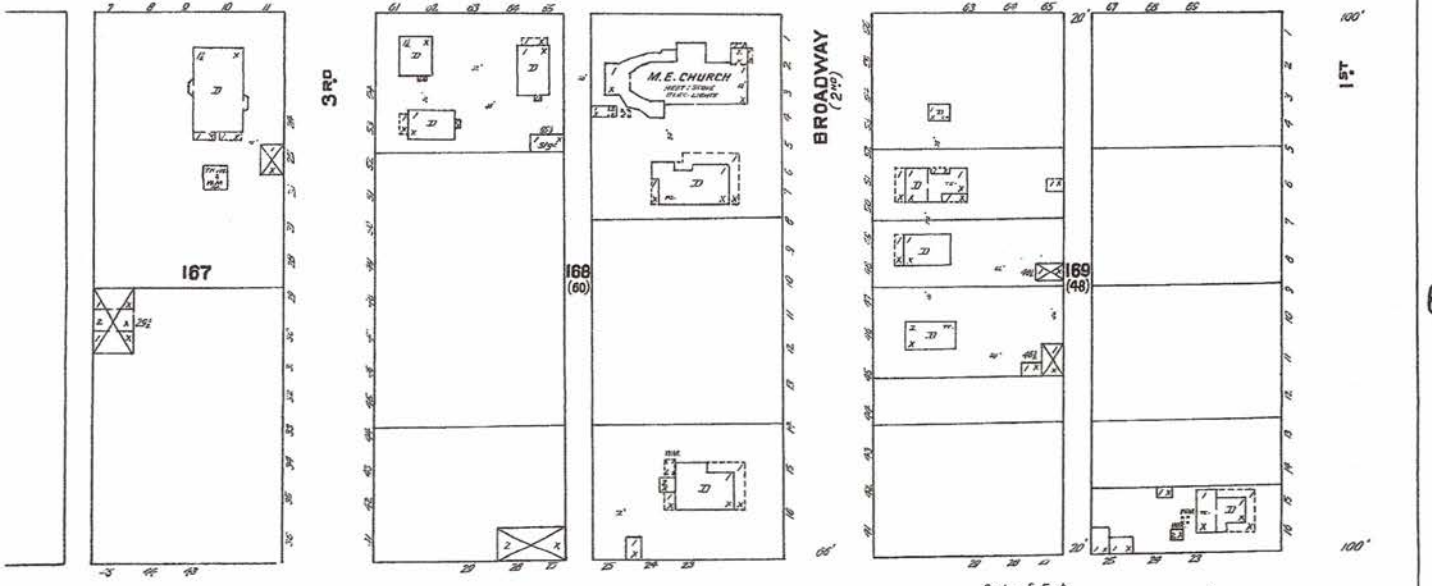


1910

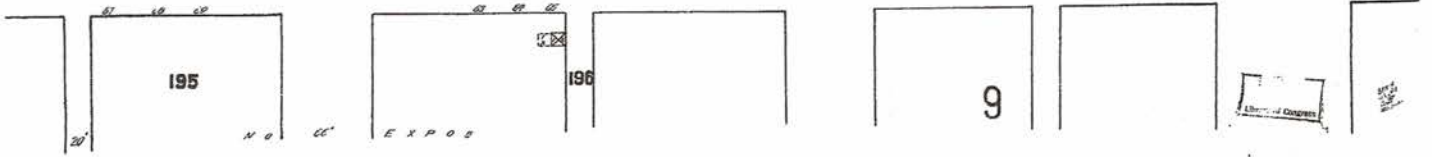


Nov. 1910
TURLOCK
CAL.

A.



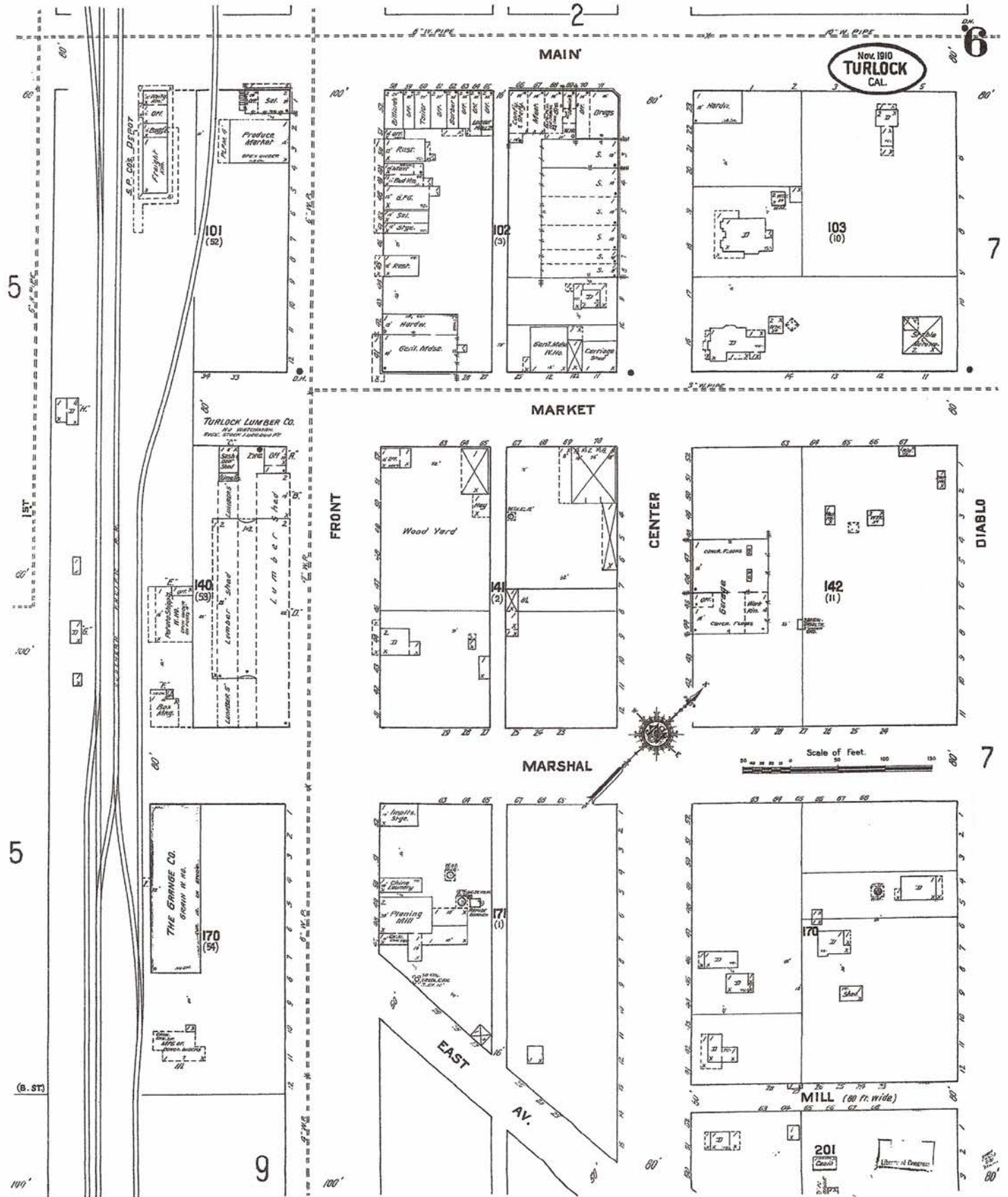
B.



9

Library of Congress

1910



Nov. 1910
TURLOCK
CAL.

Scale of Feet.
0 50 100 150

5

5

(B. ST.)

9

6

7

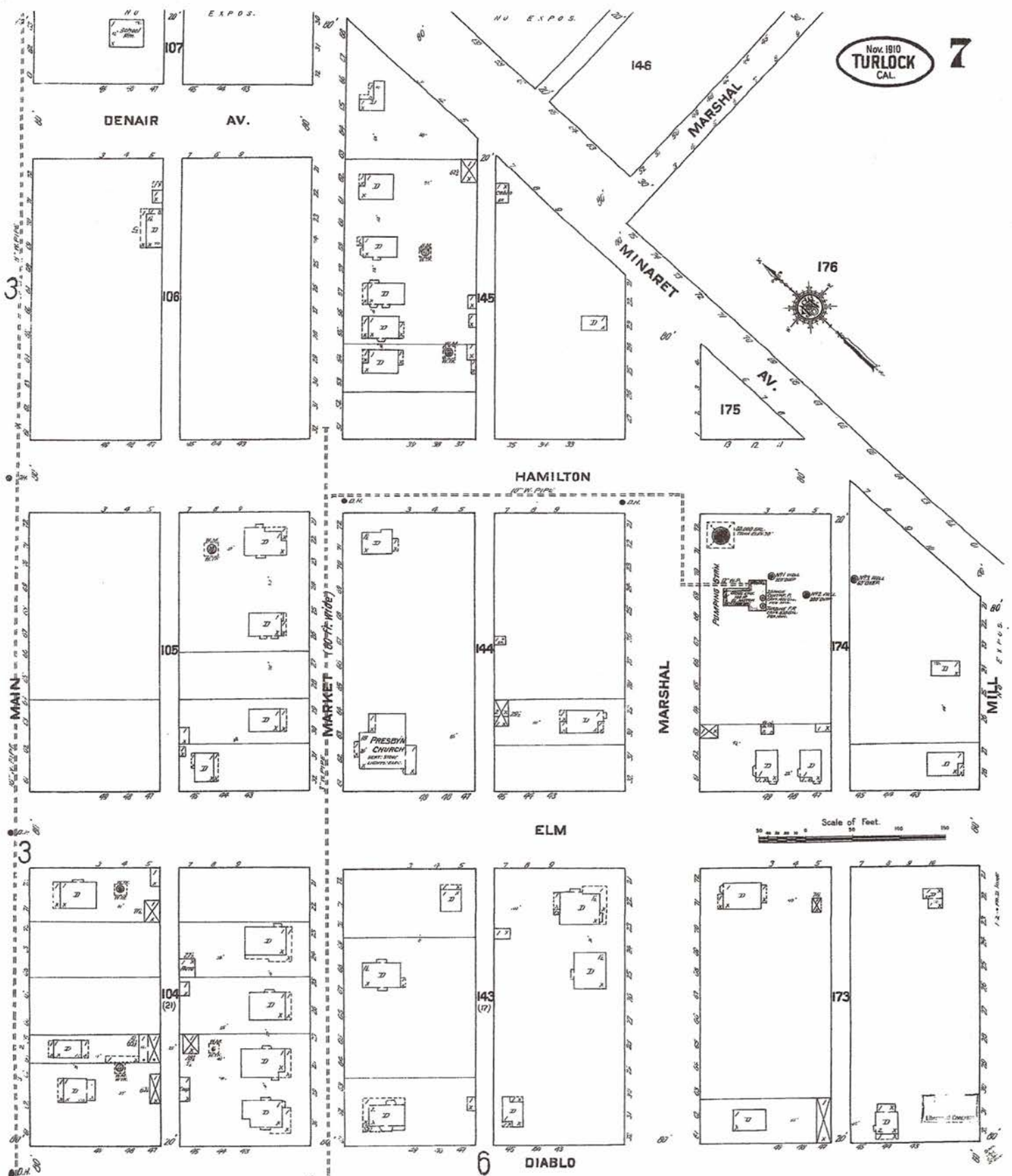
DIABLO

7

80'

1910

Nov. 1910
TURLOCK
CAL. 7



3
3
3

6

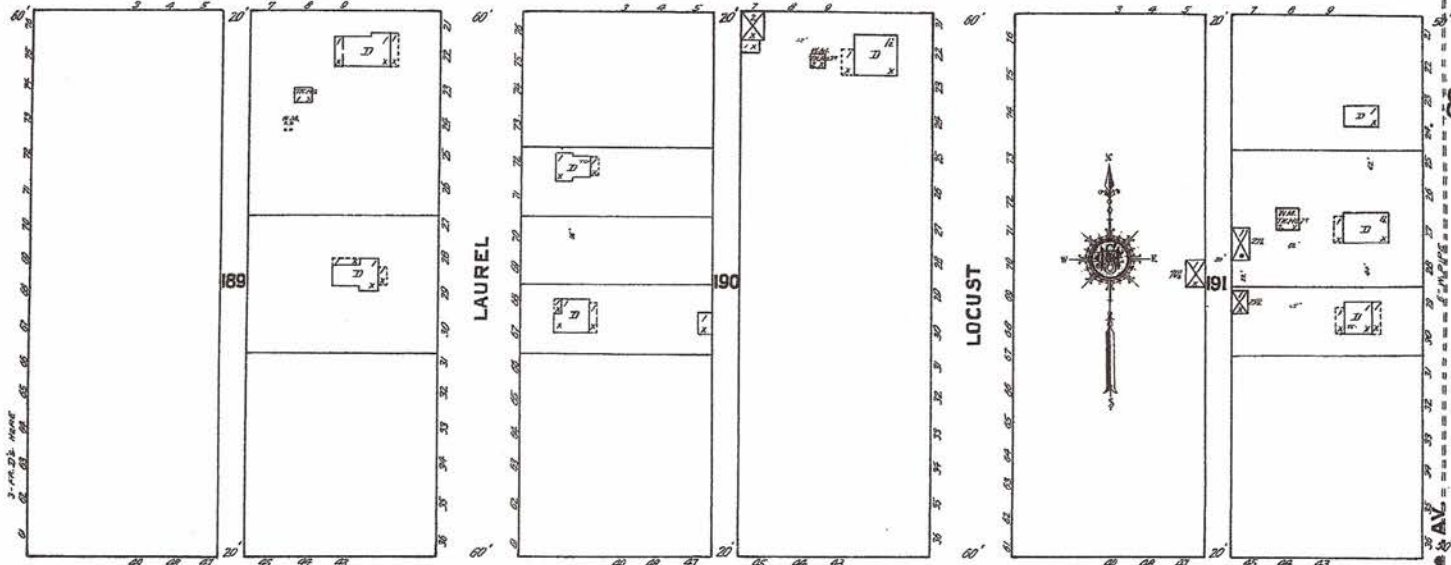
1/2" = 100.00 Feet

1910

Nov. 1910
TURLOCK
CAL.

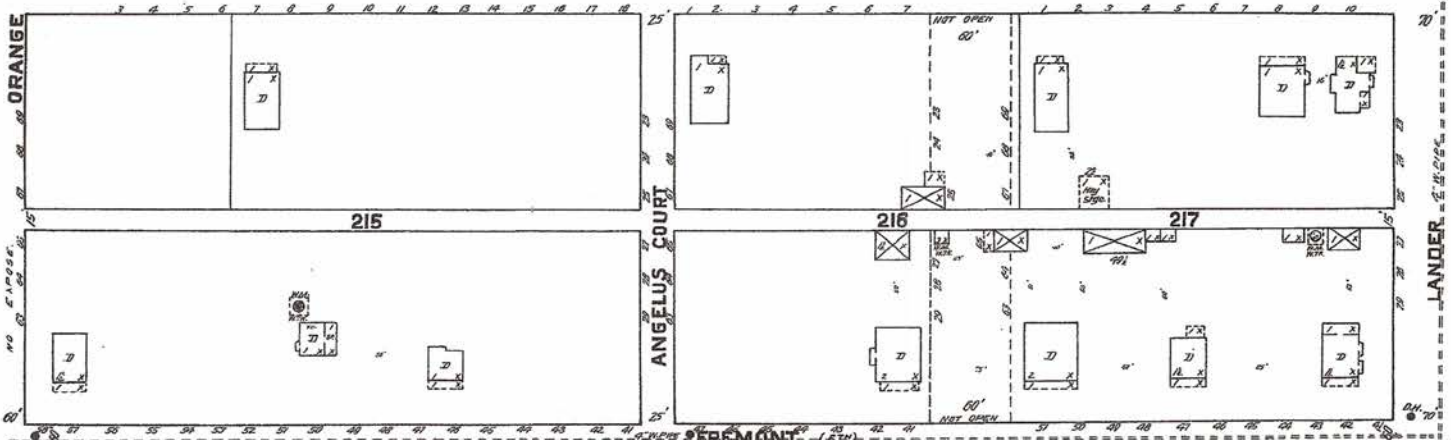
8

CASTOR
(390)

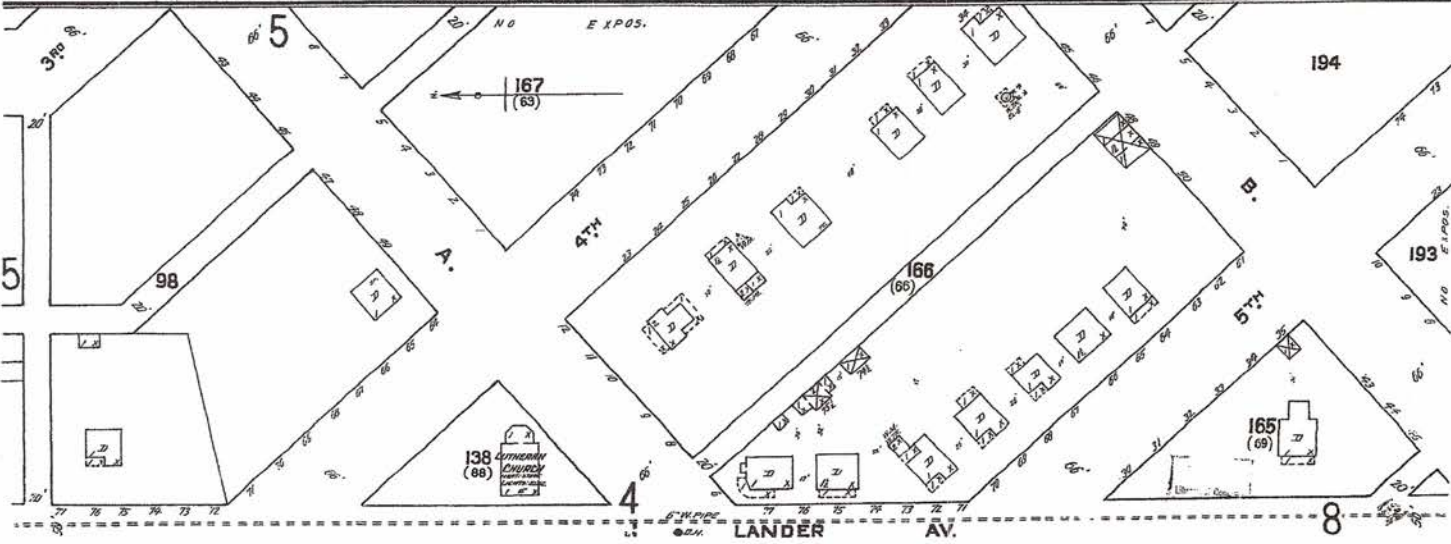


CRYSTAL
(471)

Scale of Feet.



FREMONT
(64)



LANDER AV.

1910

